

## Study on red rot disease of sugarcane

### Symptoms:

1. Dark-reddish elongated lesion with dark margins develops on the midrib. In mature lesions the centre become straw colored and the black dot like acervuli develop on it.
2. Usually third or the fourth leaf from the top is affected and shows drying at the tip.
3. When the infected canes are split open they give out an alcoholic smell due to fermentation and infected tissues are found red color interrupted by occasional whitish patches across the stalk.
4. The reddening is most intense in the vascular bundles and extends to the pith. Finally the pith dries, the rind shrinks and the canes become lighter in weight and easily broken.

### Causal organism:

*Colletotrichum falcatum* (anamorph)

*Glomerella tucumanensis* (teliorph)

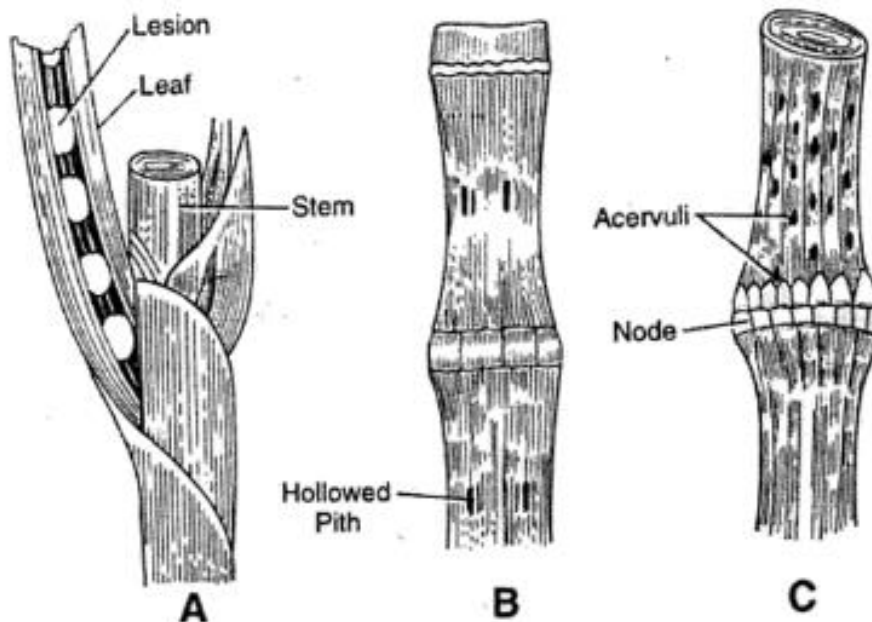


Fig. 19.3 *Colletotrichum falcatum* : Symptoms of red rot